

SIRIUS

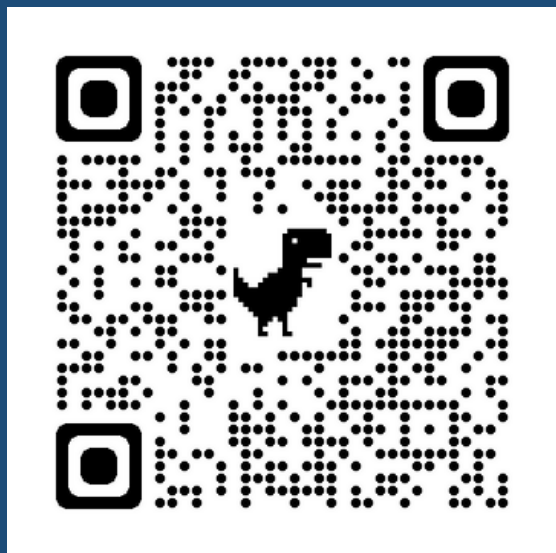
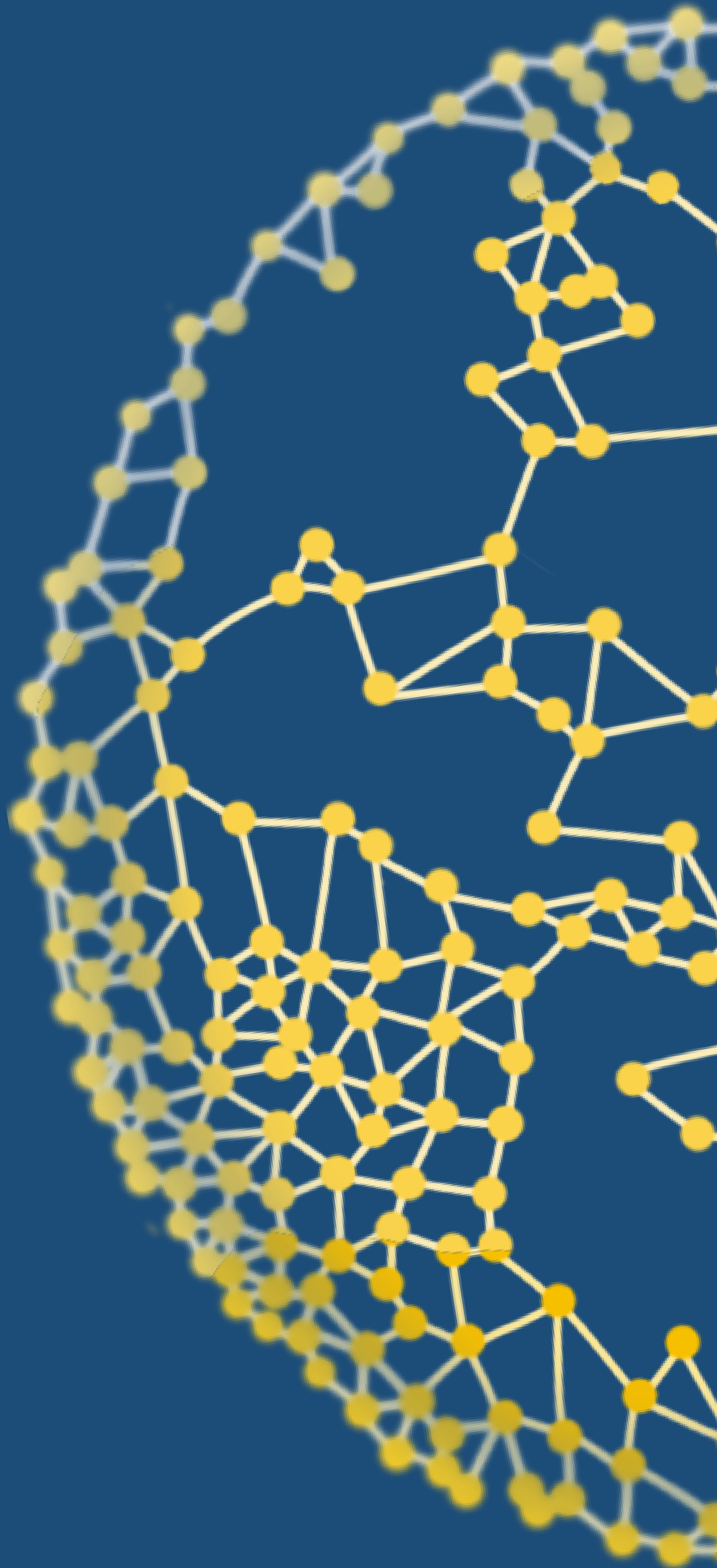
FRANCE & INTERNATIONAL

THE SIRIUS MONTPELLIER FRANCE NETWORK, SUPPORTED BY RESEARCHERS FROM THE UNIVERSITY OF MONTPELLIER 3, MEMBERS OF THE LHUMAIN RESEARCH UNIT, IN CONJUNCTION WITH ASSOCIATIONS AND INSTITUTIONS, AIMS TO FORGE LASTING LINKS BETWEEN FORMAL, INFORMAL AND NON-FORMAL EDUCATION.

THE ULTIMATE AIM IS TO WORK TOWARDS THE CREATION AND DISSEMINATION OF TEACHING AND POLICY TOOLS AND APPROACHES THAT DRAW ON THE CULTURAL AND MULTILINGUAL RESOURCES OF THE VARIOUS ACTORS IN THE NETWORK.

- SETTING UP A RESOURCE PLATFORM TO FORGE LINKS BETWEEN THE VARIOUS EDUCATIONAL STRUCTURES.
- IMPLEMENTATION OF INCLUSIVE ACTIONS (IN THE COMMUNITY, BETWEEN INSTITUTIONS, WITH FAMILIES, ETC.)
- INFORMATION FOR AND BY THE FAMILIES OF YOUNG PEOPLE IN DIFFERENT LANGUAGES, BOTH SPOKEN AND WRITTEN.

AT THE LOCAL LEVEL, THE SIRIUS NETWORK IS ROOTED IN "LEARNING TERRITORIES" OPEN TO YOUNG MIGRANTS AND THEIR FAMILIES. THIS MEANS FORGING SOLID LINKS BETWEEN FORMAL, NON-FORMAL AND INFORMAL EDUCATION STRUCTURES, AND WORKING TOGETHER ON THE ISSUES OF FRENCH LANGUAGE LEARNING, MULTILINGUALISM AND INTERCULTURAL EXCHANGES.



ACCES AU SITE FRANCAIS SIRIUS



LHUMAIN